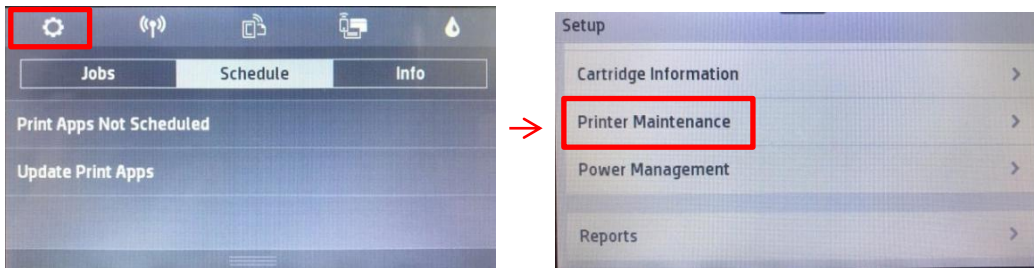


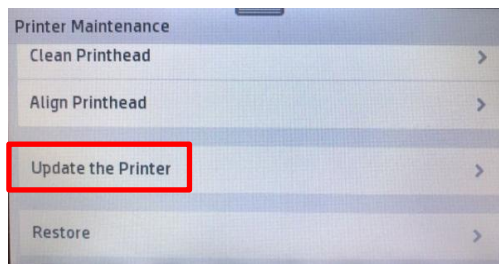
# Instruction of Turning Off Automatically Update Check for HP 952 Series

## 1. Operations for turning off Automatically Update Check.

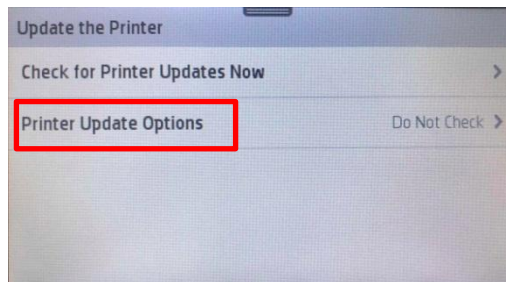
1.1 Click “Setup” on printer operation panel and find “Printer Maintenance”;



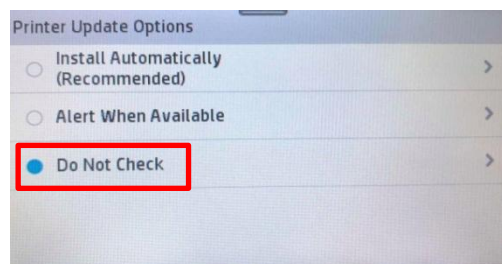
1.2 Click “Update the Printer” in “Printer Maintenance” interface;



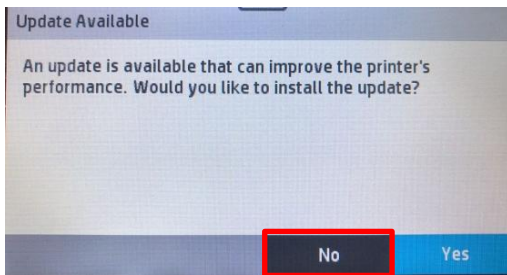
1.3 Enter into “Update the Printer” interface and click “Printer Update Options”;



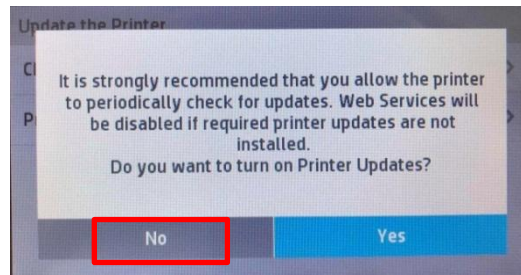
1.4 Choose “Do Not Check” in “Printer Update Options” interface;



2. When the printer is connected with WIFI while Automatically Update Check is not turned off, “Update Available” notice shown in picture 1 may be displayed.



Picture 1

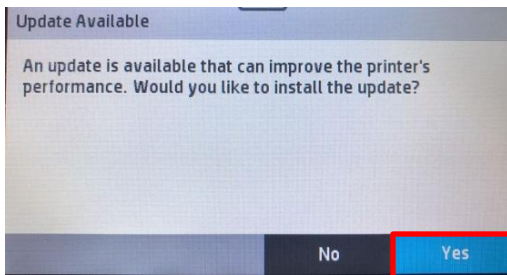


Picture 2

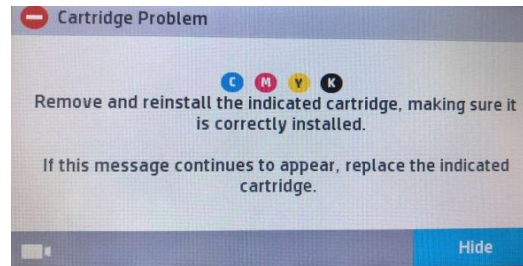
Notice: Updating firmware may cause replacement chips to fail to work properly, please click “No” when above notice (as picture 2) shows to turn off “Printer Update”.

3. Risk of chip unrecognition may be encountered after printer updated.

As we clicked “Yes” (as shown in Picture 3) , “Cartridge Problem” notice displayed (as shown in Picture 4). The replacement chips installed in the printer can’t be used any more.



Picture 3



Picture 4

Notice: Please turn off “Automatically Update Check” as above instructions and do not take the initiative to update the printer firmware. In this way, risk of chip unrecognition can be reduced.